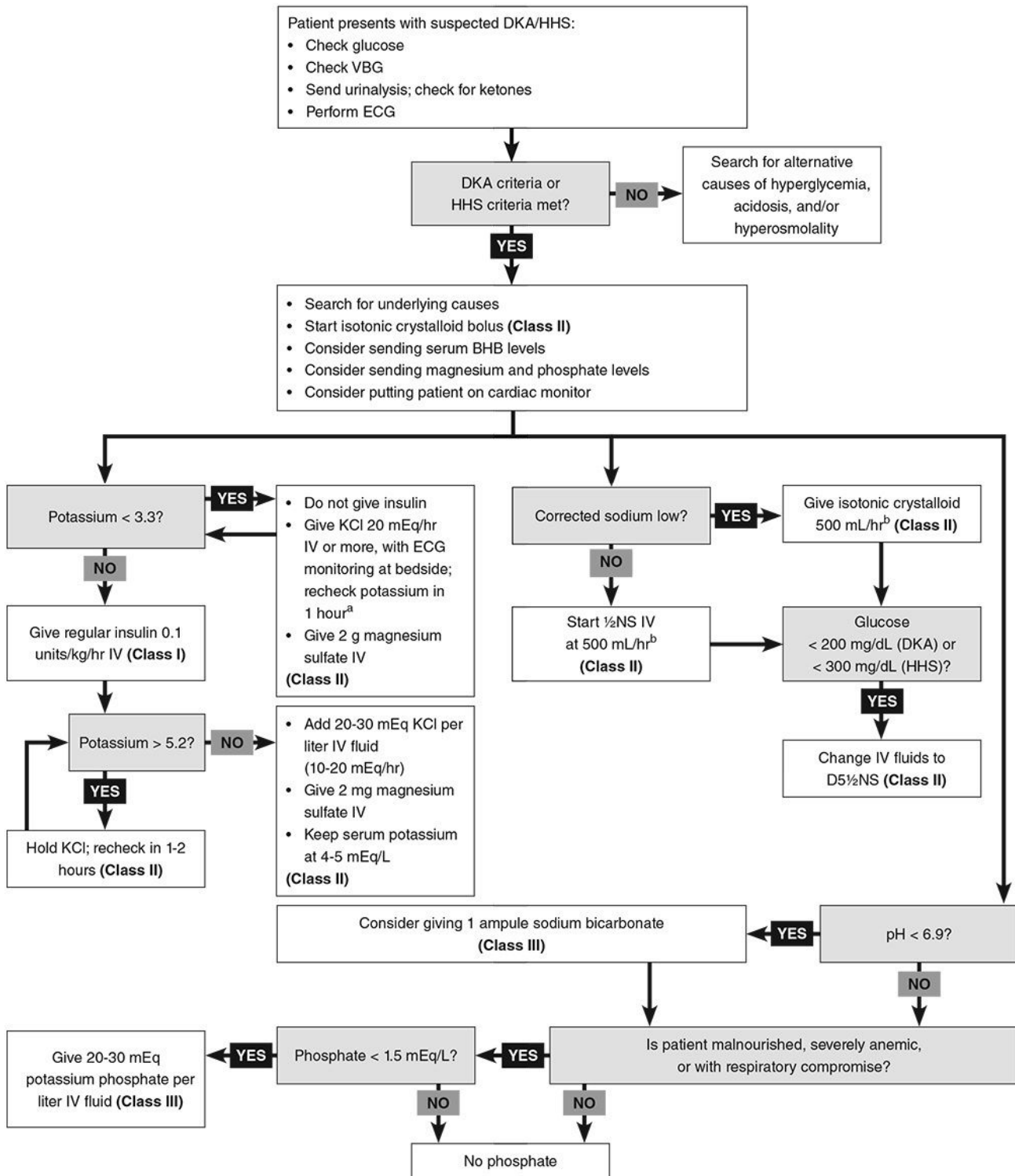


Clinical Pathway for Emergency Department Management of Diabetic Ketoacidosis and Hyperosmolar Hyperglycemic State



^aFollow individual hospital guidelines for potassium infusion rates.

^bUse lower rates for mild cases or if patient at risk for volume overload.

Abbreviations: ½NS, half-normal (0.45%) saline; BHB, beta-hydroxybutyrate; D5½NS, 5% dextrose in 0.45% [half-normal] saline; DKA, diabetic ketoacidosis; ECG, electrocardiogram; HHS, hyperosmolar hyperglycemic state; IV, intravenous; KCl, potassium chloride; VBG, venous blood gas.